



# **BETTER Life**

BETTER Life Summer School  
Ana Sopina, PhD, 10/09/2024

## **PROJECTS WITH SOCIALLY ENGAGED RESEARCH SMART-U-GREEN**



Funded by  
the European Union

Funded by the European Union. Views and opinions expressed are however those of the author(s) only and do not necessarily reflect those of the European Union or European Research Executive Agency (REA). Neither the European Union nor the granting authority can be held responsible for them.



# SMART-U-GREEN

## Governing conflicting perspectives on transformations in the urban rural continuum

Funding: **EU Horizon**, grant agreement no. 693443

Duration: 2017 – 2021

Internet: <https://www.smartugreen.eu/project/>

Contact: Matthijs Hisschemoller, PhD, DRIFT

Project partners: DRIFT, **Erasmus University Rotterdam**, SAAD, **University of Camerino**, **Université de Reims**

Associated partners: **University of Zagreb**, **Pskov State University**, IATEUR IRCS, Regio Drechtsteden, Marche Region, Grand Reims, University of Guelph, EKAPRAEKT, CIVILSCAPE





# SMART-U-GREEN

## Governing conflicting perspectives on transformations in the urban rural continuum

**Urban landscapes** witness **major transformations** that **affect landscape quality and quality of life**. Urban landscape transformations come with **conflicts involving many actors, interests**, and rapidly changing advocacy.

Smart-U-Green investigates **new urban planning regimes** that confront hierarchical urban planning with bottom-up initiatives to **adopt more organic, collaborative, and transformative forms of governance**. Together with local governments, local businesses, citizen initiatives, and NGOs the project **explores new forms of governance**.

# SMART-U-GREEN



## LANDSCAPE CONFLICTS

\_analyse **stakeholder perspectives** to understand their arguments in policy controversies

\_the **Repertory Grid technique** in combination with statistical analysis to **identify the range of perspectives** in all cases



## POLICY CONTROVERSIES

\_analyse **policy controversies** to understand how **power relations** inhibit or enable the **utilization of knowledge**

\_ **political agenda-building approach** to identify policy controversies in the case regions and evaluate these with **QLand/QLife indicators**

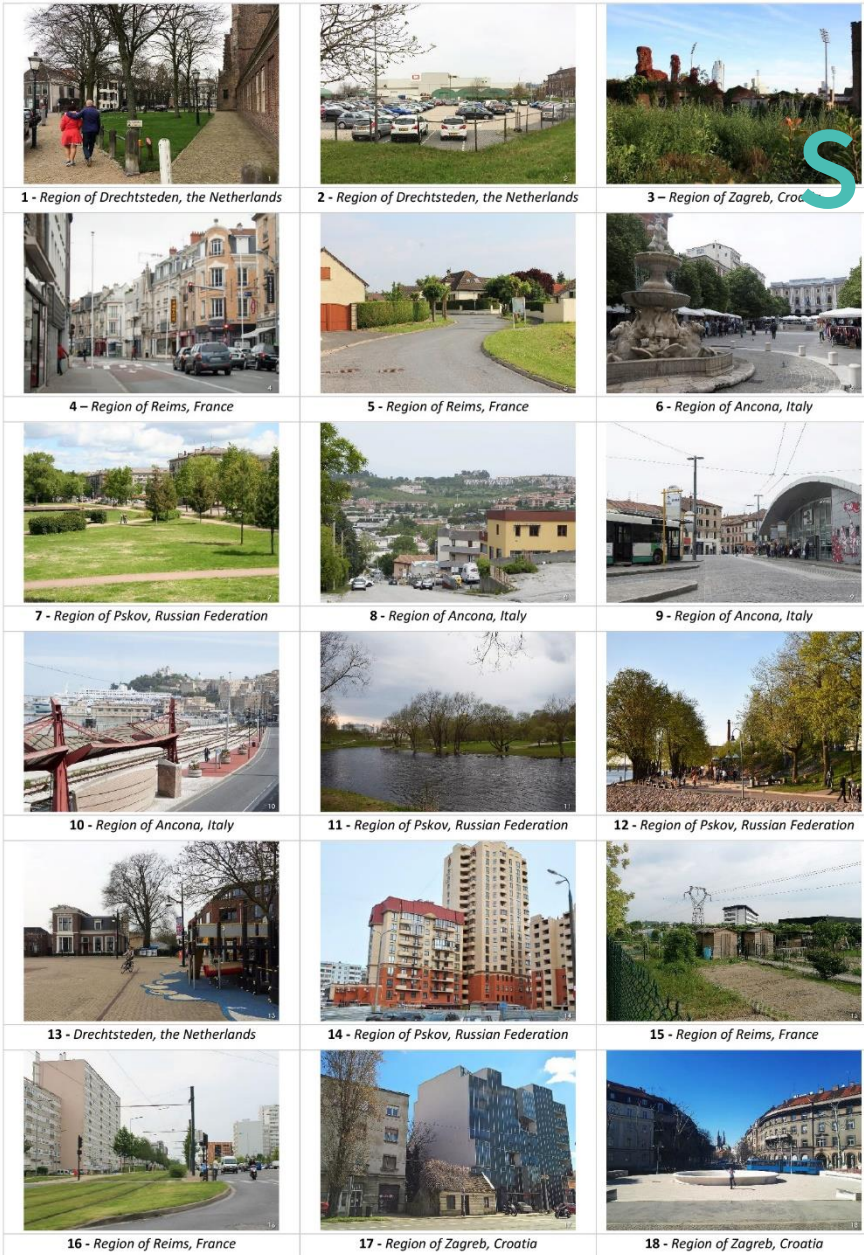


## GOVERNANCE CHALLENGES

\_identify and explore **innovative governance options** for greening urban landscapes

\_ **stakeholder workshops for joint fact-finding and decision support** in the primary case study areas

# SMART-U-GREEN



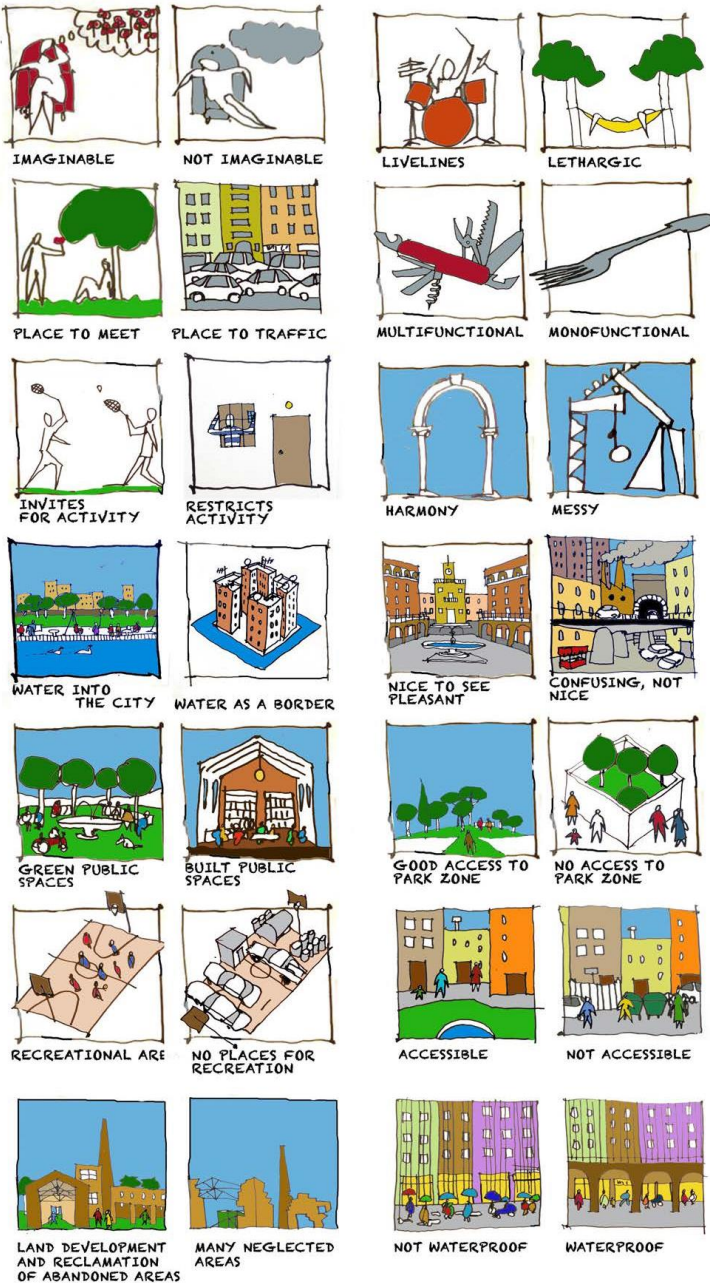
## LANDSCAPE CONFLICTS

Using the **Repertory Grid technique** to identify:

- underlying **dimensions (constructs) through which stakeholders evaluate** their immediate environment
- different **perspectives that can be articulated on transformations** in the urban-rural continuum

What can be learned from **comparing the regional perspectives?**

Conflicting perspectives on urban landscape quality in six urban regions in Europe and their implications for urban transitions



# SMART-U-GREEN

## POLICY CONTROVERSIES

Using the **political agenda-building approach** and **QLand/QLife indicators** to identify:

- framework of **sustainability indicators** that articulate close relationships **between ecological, social, economic, and aesthetic issues** connected to related fields of expertise
- principles of **urban systems operating** and **mechanisms** that must be addressed in order to accelerate a transition to urban sustainability



# SMART-U-GREEN

## GOVERNANCE CHALLENGES

Using the **joint-fact finding approach** to:

- emphasize the **out-of-the-box thinking among dialogue participants**
- avoid collateral conflicts by **sound decisions** that require **shared data and inclusive procedures** to begin with.

Each workshop **encourages all participants to determine their agenda** and **present their own visions and ideas** towards sustainability transitions in the urban-rural continuum.



**BETTER**  
Life

# LESSONS LEARNED FROM THE SMART-U-GREEN PROJECT

- **identification of key stakeholders** through interviews, document analysis, and inputs from various researchers
- **visual materials, contrasting arguments, and clear questions** aid non-specialised stakeholders to **express and share their knowledge and perspective**
- shared and overlapped **visions and ideas of all stakeholders** enrich and **raise the quality of the result**

Ana Sopina, PhD  
[asopina@arhitekt.hr](mailto:asopina@arhitekt.hr)